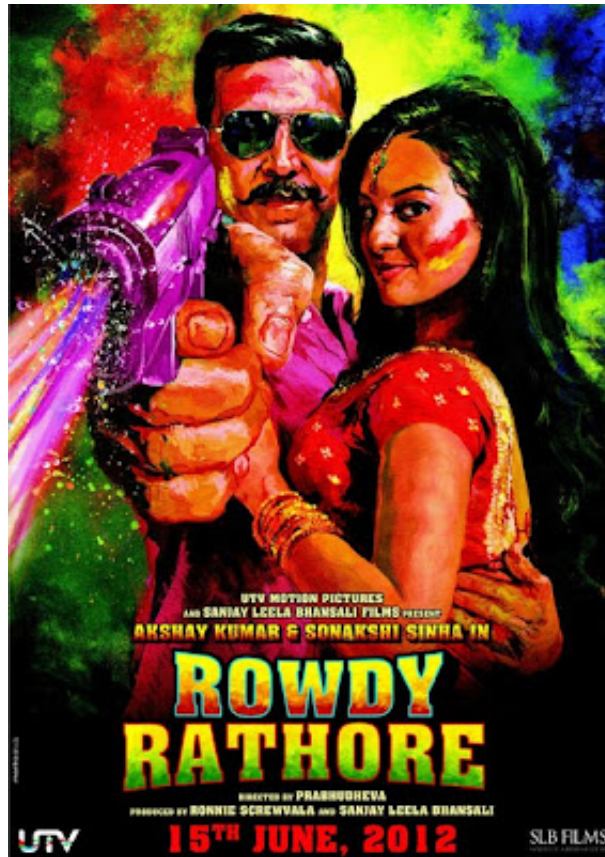

Kismat Bole Toh Download Movie In Hindi



DOWNLOAD: <https://tinurli.com/2iltyx>

DOWNLOAD

It stars Abhishek Bachchan, Sonam Kapoor, Deepika Padukone and Raza Murad in leading roles. The film was remade in Bengali as Swarg. Akshay Kumar's item number "Rang De Basanti Song" was later selected for the film. Plot The film revolves around three friends and their respective romances. Siddhartha Singh (Abhishek Bachchan) is a respectable businessman who is married to Swarna (Lara Dutta) who is possessive and keen on getting a son. He falls in love with Reena (Sonam Kapoor), an old schoolmate of his. Sunil Kumar (Raza Murad) is a poor village boy who loves his parents. He is not very bright but is very loyal to his parents. He falls in love with a beautiful model called Tanvi (Deepika Padukone) and is subsequently sent to stay with a

relative in a city. His dream is to own a truck with a travel agency on the top of it. He is in love with Reena, but thinks it is beyond him. He is forced to pretend to be interested in Tanvi and swears to keep his feelings to himself. Suraj (Vinay Pathak) is an ex-terrorist who has been released from jail after 9 years. He is married to Shanti (Farah) and has a son, Rahul. Suraj falls in love with Reena but gets a chance to play a terrorist act in America. He finds Tanvi on the way and tries to kill her, but in vain.

He is shocked when he finds out that she has fallen in love with Sunil. Cast Abhishek Bachchan as Siddhartha Singh Sonam Kapoor as Reena Deepika Padukone as Tanvi Raza Murad as Sunil Kumar Vinay Pathak as Suraj Lalita Pawar as Sunil's Mother Siddharth Ray as Rahul Tisca Chopra as Tanvi's mom Farah Khan as Shanti (Suraj's Wife) Lara Dutta as Swarna Naseeruddin Shah as Swarna's Boss Puneet Issar as Banke Rai Mithun Chakraborty as Raju Box office The film was declared as a flop in its opening weekend. Soundtrack The film 82157476af

[Gsonique Ultrabass MX44 VSTi V10](#)
[rab ne bana di jodi complete movie 83](#)
[Ecmg explorer free download](#)